

WE WALK ALONGSIDE THE WORLD

Stock code:300415

Designed by Yizumi in October 2018

PAC-K



Thin-wall Injection Molding System Solution

广东伊之密高速包装系统有限公司
GUANGDONG YIZUMI HIGH SPEED PACKAGING SYSTEM CO., LTD.

Address: No.9, Shunchang Road, Daliang, Shunde, Foshan, Guangdong Province, China 528306
TEL: 86-757-2926 2215 www.yizumi.com Email: imm@yizumi.com



YIZUMI 伊之密

About Us



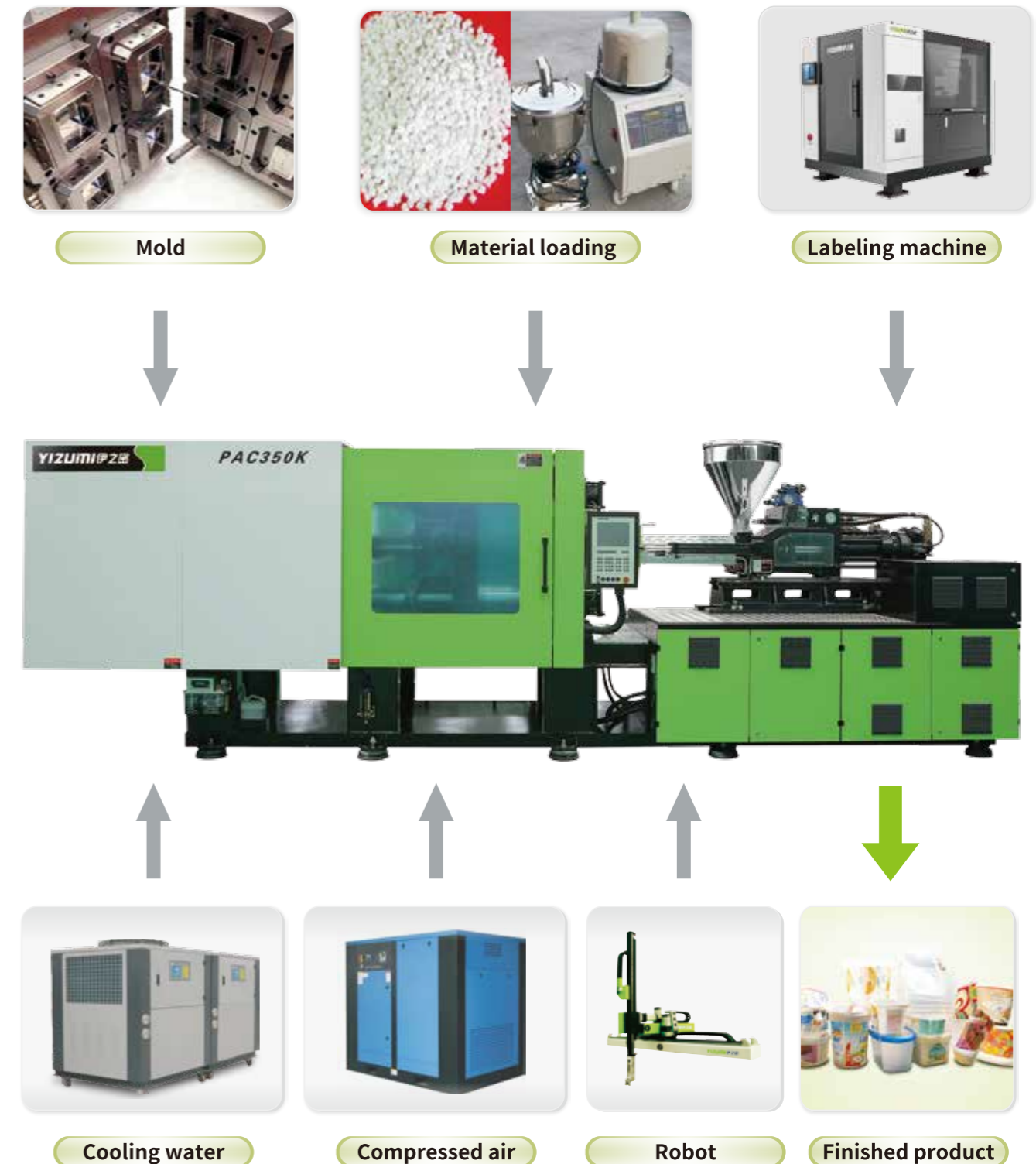
Guangdong Yizumi High Speed Packaging System Company Limited is established to cope with the world's growing demands for high-speed packaging equipment. With strong financial base, large company size and elites in R&D, design, manufacturing, service and marketing, we pursue the mission of "Facilitate Chinese machine technology keeping pace with the world and provide global customers with better investment return and experience".

We, based on the ideas of "highly-efficient, precise, economical, reliable, energy-saving and environment-friendly", offer turnkey high-speed injection molding systems for different types of thin-wall plastic packaging products such as food containers, IML ice cream containers, IML buckets and IML packaging containers.

We have a team of innovative R&D elites. Through highly-efficient management, cutting-edge machining equipment, complete constant-temperature dust-free production lines, innovation, the spirit of working earnestly and years of experience in machine manufacturing, we can offer specialized thin-wall injection molding solutions.

Since establishment, we have always aimed to meet the customer needs, offer turnkey solutions for customers, serve them sincerely, create more value and provide better investment return for them. In addition, we are committed to establishing five-star service system in the industry and consistently endeavor to provide speedy and accurate services for customers worldwide and increase their competitiveness.

Processes of Thin-wall Injection Molding System



Thin Wall Injection Molding Machine



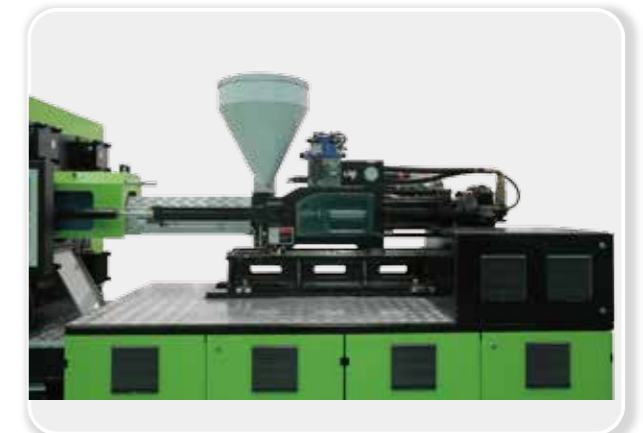
High-precision injection control system



Durable high-rigidity clamping unit



High-response hydraulic system



Single-cylinder injection system with high precision

Application Examples of Thin Wall Injection Molding System



Case 1: 1000ml fast food container

Information of molded part		Information of IMM		Information of plastic material		Information of mold	
Molded part	1000ml fast food container	Machine model	PAC350K	Plastic material	PP	Cavity number	4
Size (l×w×h)	175mm×116mm×70mm	Shot weight	579g	Melt mass /flow rate	50g/10min	Platen number	2
Unit weight	16.8g	Space between tie bars (mm×mm)	630mm×630mm	Tensile yield stress	38.6Mpa	Runner	hot runner
Wall thickness	0.38mm	Mold thickness (min.- max.)	250mm-630mm	Manufacturer	Langang Petrochemical	Size	850mm×540mm×470mm
Cycle time	5.5s	Opening stroke	610mm	Grade	H9018	Weight	1.6Tons

Actual Energy Consumption Test							
Accumulative energy consumption	EP(Wh)	Test time (s)	Part weight (g/cycle)	Output (pcs)	Weight of raw material (kg/h)	Energy consumption (kw.h)	Average energy consumption (kw.h/kg)
Σ	8.11	1200	67.2	2313	38.8	24.33	0.627

Case 2: In mold-labeled cup

Injection molding machine: PAC200K

Mold: Yizumi

Cavities: 4

Material: PP980

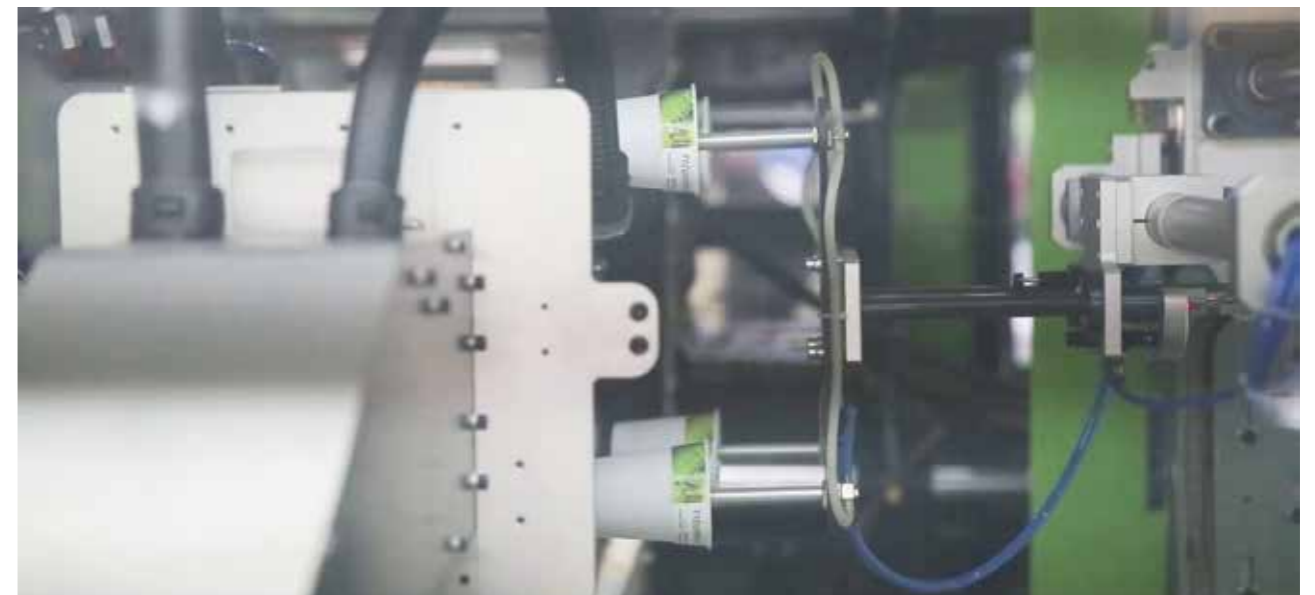
Part weight: 6.5g×4 cav.

Cycle time: ≤3s

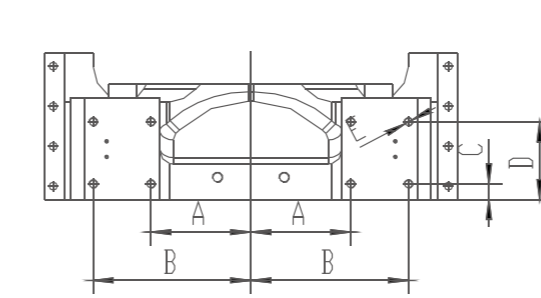
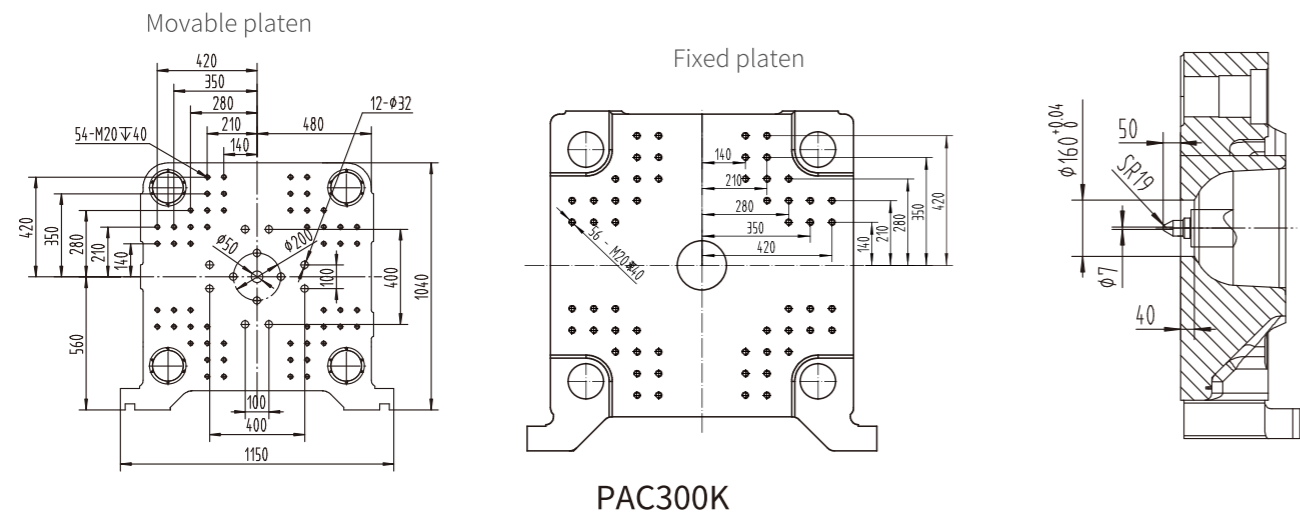
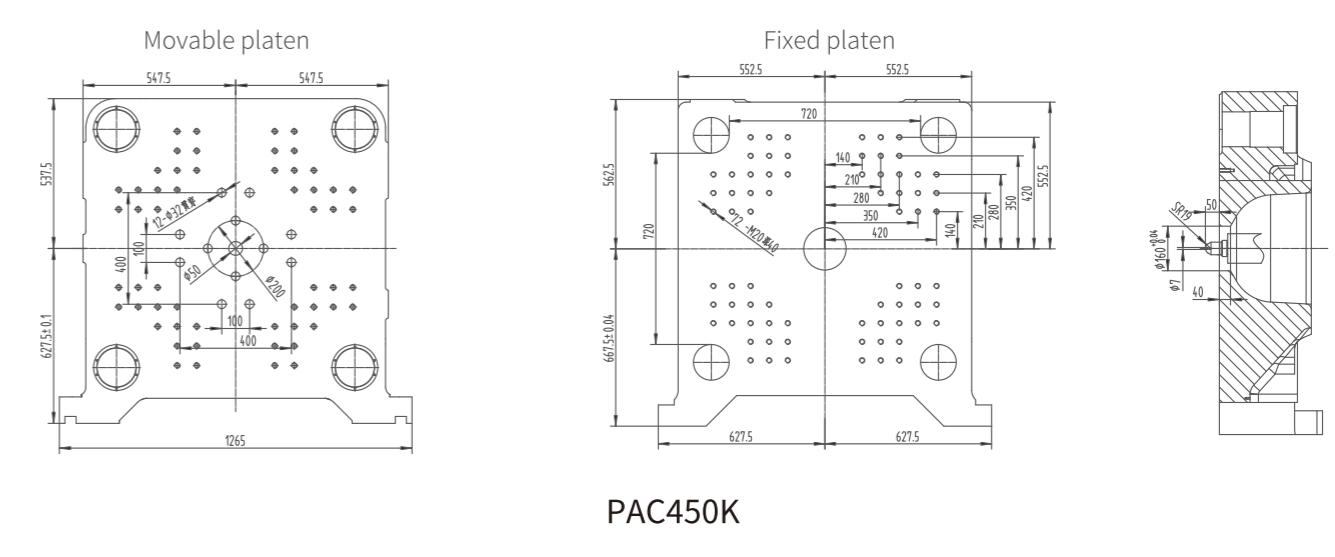
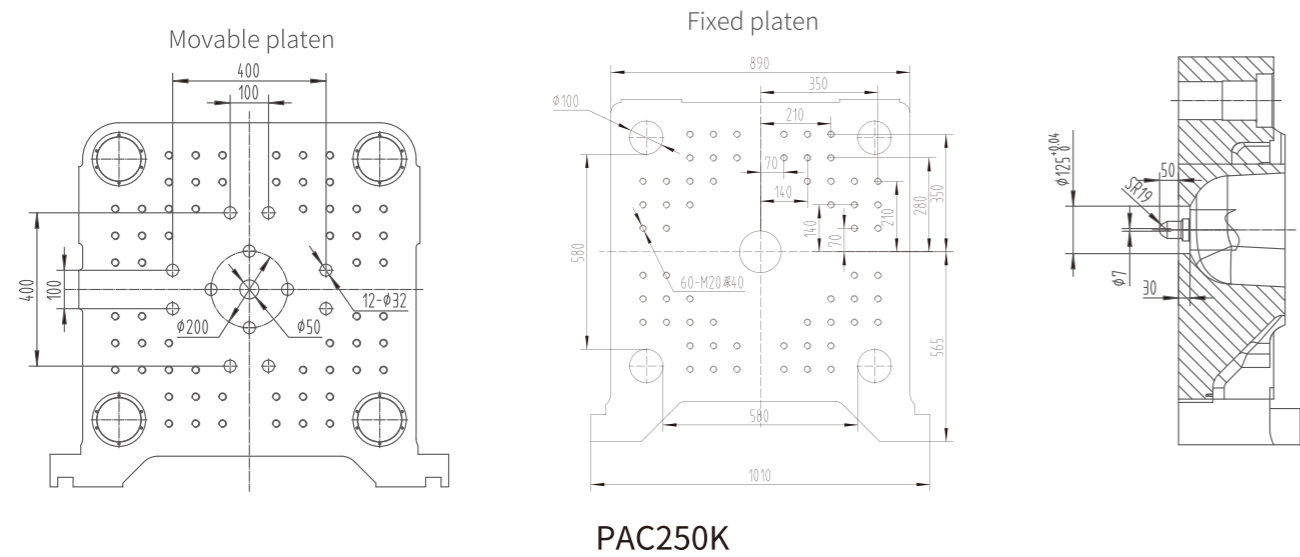
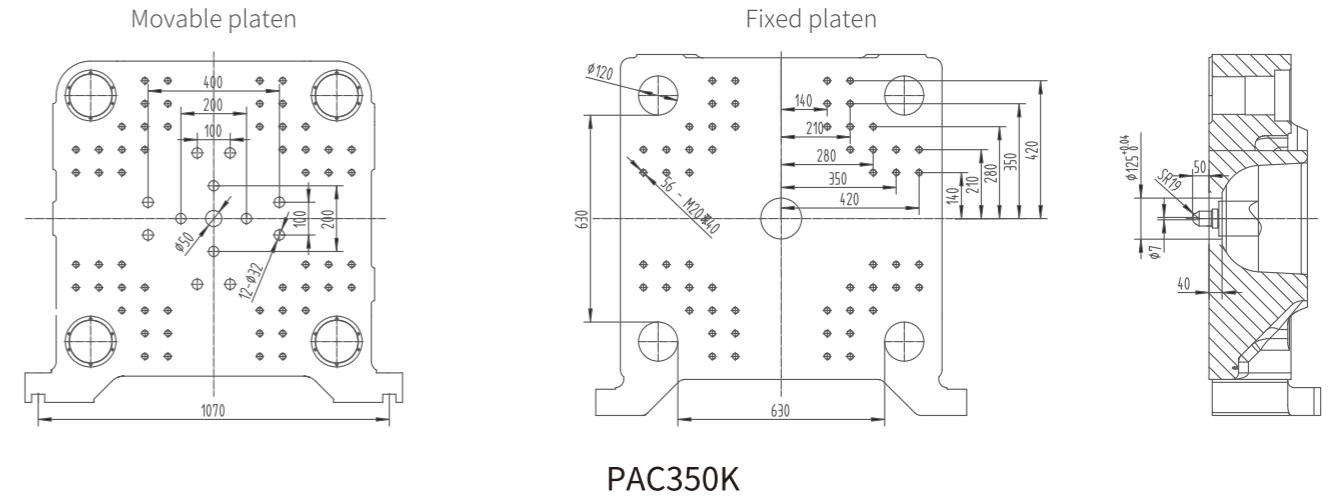
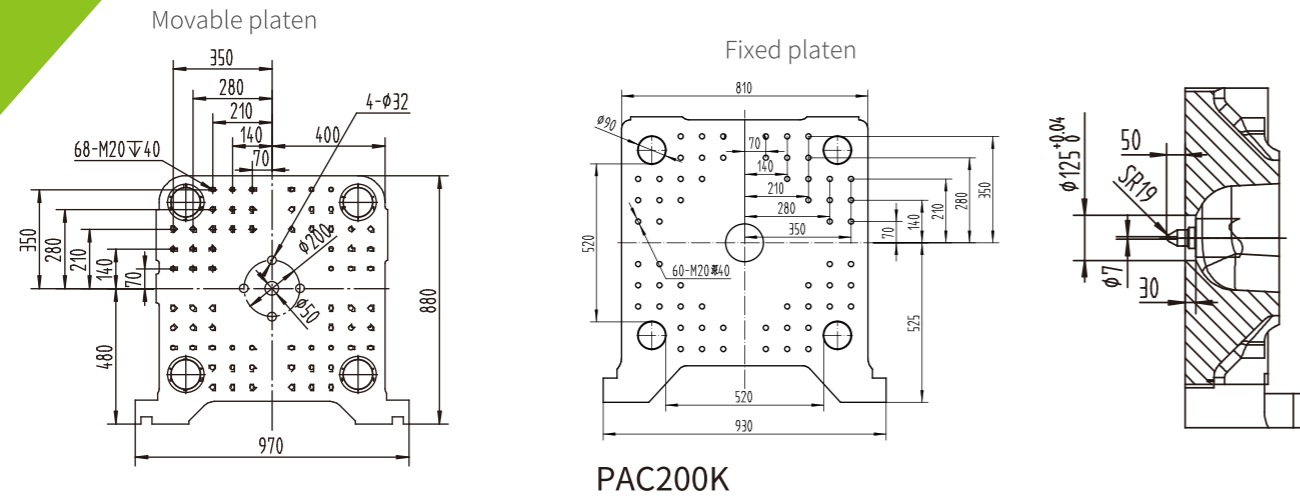


Highlights of system:

- Shorter production cycle and higher efficiency
- High repeatability of part weight and dimensions
- Less production costs
- Good coordination with high-speed in-mold labeling system



Platen Dimension Drawings



Robot Mounting Holes in the Fixed Platen

	A	B	C	D	E
PAC200K	225	355	35	175	M20 ∇ 40
PAC250K	280	380	35	175	M20 ∇ 40
PAC300K	300	420	35	175	M20 ∇ 40
PAC350K	300	420	35	175	M20 ∇ 40
PAC450K	350	490	35	175	M20 ∇ 40

Specifications of PAC-K Injection Molding Machines

(Selection of Injection Unit Depends on the Product Requirements)

Description	UNIT	PAC200K	PAC250K				PAC300K				PAC350K				PAC450K					
International size rating		440/2000	440/2500	640/2500	840/3000	1080/3000	840/3500	1080/3500	840/4500	1080/4500										
Injection Unit																				
Screw diameter	mm	40	45	40	45	45	50	50	55	55	60	50	55	55	60	50	55	60	55	60
Shot volume	cm ³	221	280	221	279	333	412	442	534	593	706	442	534	593	706	442	534	636	593	706
Shot weight (PS)	g	201	255	201	254	303	375	402	486	540	643	402	486	540	643	402	486	579	540	643
	oz	7.1	9	7.1	8.96	10.7	13.2	14.1	17.1	19.1	22.7	14.1	17.1	19.1	22.7	14.1	17.1	20.4	19.1	22.7
Injection pressure	MPa	199.3	157.5	199.3	157.5	194.4	157.5	190.5	157.5	187.4	157.5	190.5	157.5	187.4	157.5	190.5	157.5	132.3	187.4	157.5
Screw L:D ratio	L/D	22:1	22:1				22:1				22:1				26:1				22:1	
Max.injection speed	mm/s	280	291	236	280	236	319	269	584	492										
Screw stroke	mm	176	176	210	225	250	225	250	225	250	225	250	225	250	225	250	225	250	225	250
Screw speed (normal)	r/min	300	300				300				300				300					
Clamping Unit																				
Clamping force	kN	2000	2500				3000				3500				4500					
Opening stroke	mm	500	560				610				610				700					
Space between tie bars	mm×mm	520x520	580×580				635x635				630x630				720x720					
Max. daylight	mm	1050	1160				1260				1260				1450					
Mold thickness (min.-max.)	mm	200-550	220-600				250-650				250-650				370-750					
Ejection stroke	mm	150	180				180				180				200					
Ejection force	kN	77	137				137				137				137					
General																				
Hydraulic system pressure	MPa	17.5	17.5				17.5				17.5				17.5					
Pump motor	kW	55	55				45.2+33.9				55+33.9				55+55+55					
Heating capacity	kW	11	11	11	11	11	16.5	16.5	22	22	25	16.5	22	22	25	16.5	22	24.8	22	25
Number of temp control zones		5	5				5				5				5					
Oil tank capacity	L	500	650				650				650				950					
Machine dimensions (LxWxH)	mxmxm	6x1.8x1.9	6.8x1.8x2.1				6.9x2x2.2				6.9x1.8x2.1				8.2x2.1x2.2					
Machine weight	Ton	7.5	11				12.5				13.5				19					

■ Note: We reserve the right to make changes or improvements of the product without prior notice.
The product photos in this catalog are for reference only.